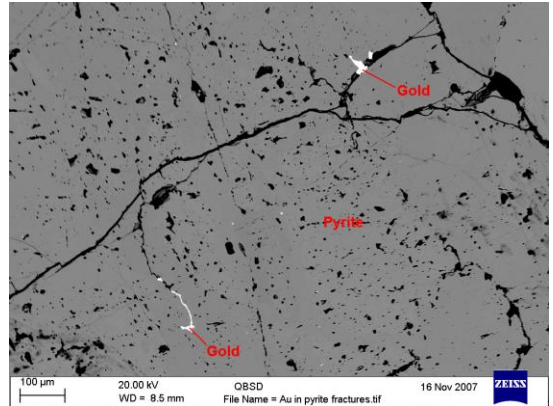


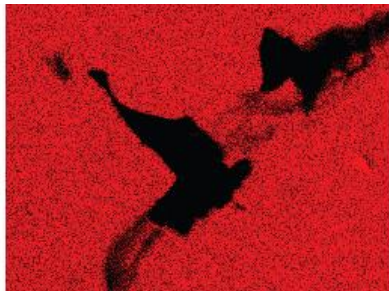
Scanning Electron Microscope / Electron Probe Micro-analysis

Ore Deposit Application

Ore deposit mineralogy, mineral textures and mineral chemistries are easily analysed using a combination of micro-beam techniques. BSE images will identify important textures in ore phases in gangue minerals, CL may be important in identifying different textures and phases of growth in gangue minerals and some ore minerals, cassiterite), and energy and wavelength dispersive micro-analysis and mapping will identify the chemistry of the phases in the deposit and map base and precious metal concentrations in individual samples.

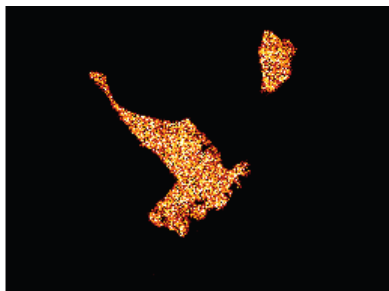


SEM back-scattered image of gold (bright spots) in fractures in pyrite, Yalea, Mali



Fe and Au maps showing gold inclusions in pyrite

Fe Ka1



Au La1

EDS spectra of pyrite (Fe-sulphide) and gold

