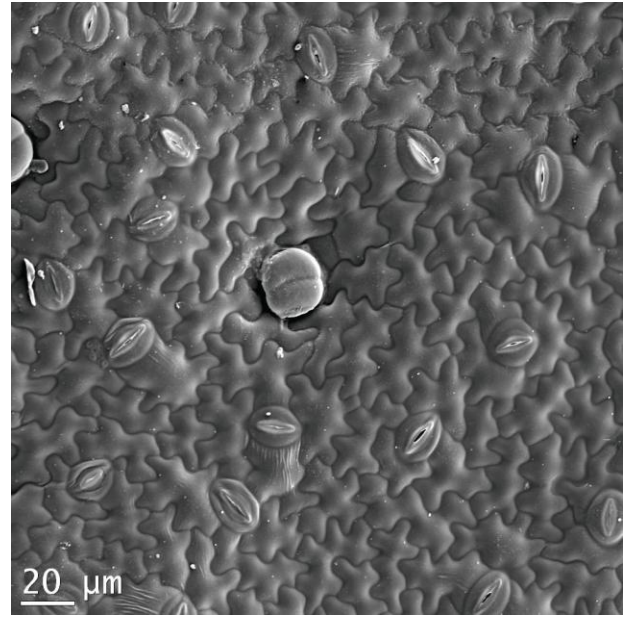
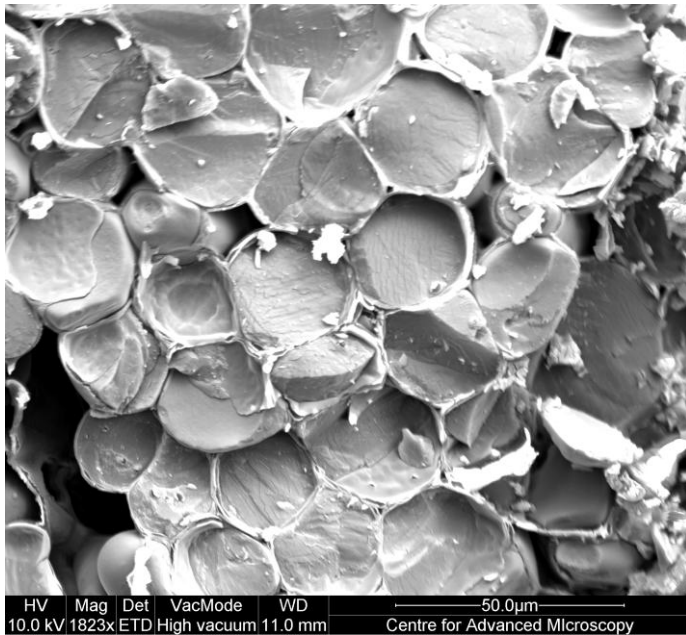


## Scanning Electron Microscope / Electron Probe Micro-analysis Cryo applications

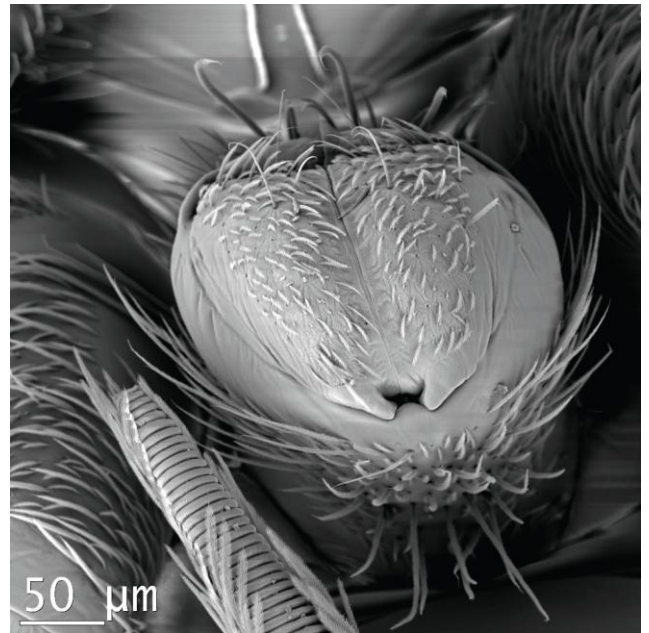
Sample preparation of biological and tissue samples for SEM analysis has long been difficult. A cryo-transfer unit permits instantaneous freezing of a sample and its introduction to the SEM through a liquid nitrogen cooled interface. Once in the microscope, the sample is held at low temperature through a liquid nitrogen cooled cold stage. The variable vacuum mode of the microscope means that sample degassing does not preclude high resolution imaging.



Base of green leaf with stomata



Section of leaf stalk



Collembola

Kingston University  
Penrhyn Road  
Kingston upon Thames  
Surrey  
KT1 2EE  
United Kingdom